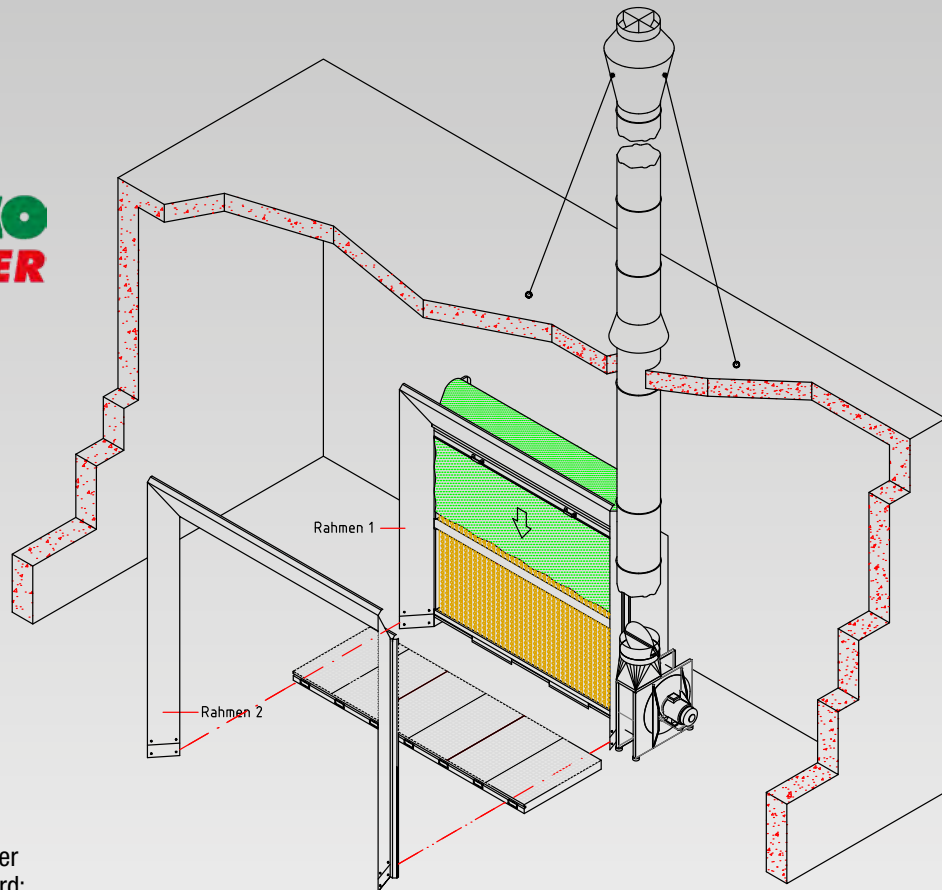


# Paint mist extraction systems FarbMEISTER und UniVERSA



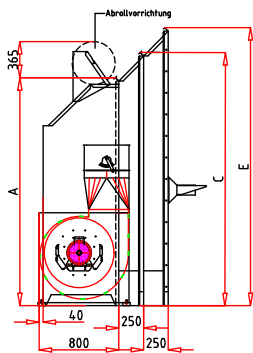
customized and demand-oriented  
for all requirements



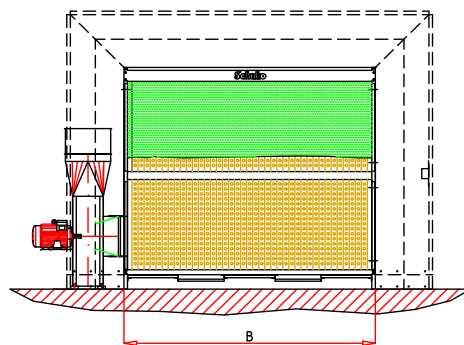
### Fan mounting side

Please always indicate the desired extraction fan mounting side in your order (right-hand side is standard; left-hand mounting is possible).

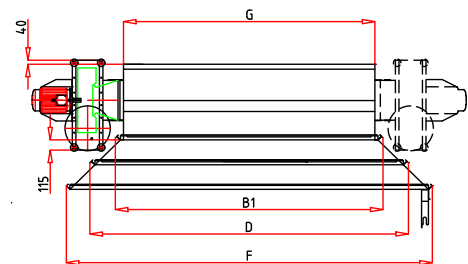
## Paint mist extraction systems - variable, powerful and economical



Side view



Front view



Top view

### The system

The **FARBMEISTER** is the largest model of the Schuko spray walls. The professional paint mist extraction wall with dry separation forms the basis of an economical and well-functioning ventilation system for all areas where surface materials containing solvents are processed. The paint mist and fumes are absorbed by a powerful fan that corresponds to the latest findings in air technology, and are then filtered out by a triple-action separation system. Due to an integrated underbody extraction system, The **FARBMEISTER** can be extended to a **UNIVERSA**, a variable two-in-one spray wall.

### The design

The entire spray mist extraction wall is made of a self-contained sedzimir-galvanized sheet steel construction. The mounting of the fan on the left-hand side is possible without any surcharge (please state in your order). The exact position of the exhaust air pipe is indicated in the technical specification. The **FARBMEISTER** can be supplied with either cardboard filter mats according to DGVU-I-209-046 or metal ribs (see page 3). The coverage area can be enlarged by means of extension elements and can thus be adapted to the respective requirements such as painting on trestles or on overhead conveyors. Even very large parts can be coated in front of this extraction wall with a max. coverage area of of W x H 2.29 x 4.14 m. Details can be found in the technical data table.



Farbmeister in special design with a left-mounted fan, a first suction surface extension stage, a spray gun hangup valve for a dual-speed motor and with an upper unreeling device for an additional paper filter mat  
Alternative option: Energy-saving flap



The efficient combination of a paint spray mist extraction wall and an underfloor extraction system



Baffle surfaces made of cardboard, filter fleece or steel ribs for dry separation

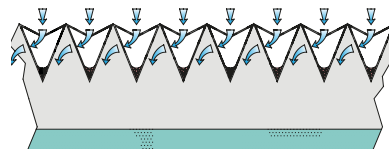
### Unwinding unit with filter fleece

Depending on the amount of material, using an additional filter mat that is connected upstream of the baffle surface can be reasonable. The mat is stored in a roll-off device on the paint mist extraction wall and if required pulled to the front of the baffle surface. This increases the service life of the standard filter mats. In case of staining, cut off the respective part and unroll a new mat.

### Grille area/ Collecting tray for paint dust:



To prevent paint deposits within the painting area, the FARBMEISTER can be furnished with a front grille. Descending paint particles fall into the collecting tray where they can harden. The collected paint dust can then be disposed of at regular intervals. The construction height of the collection tray is 100 mm; floor installation is possible.

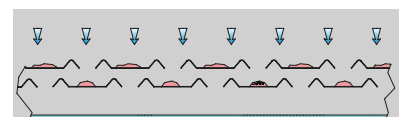


### Separation with cardboard filter mats

In the first cleaning stage, the solids carried along by the air stream collide with the cardboard filter mats. The paint particles go straight to the pockets of the cardboard filters. This is where they are collected and allowed to harden.

The cleaned air is deflected by 180 degrees and meets the second cleaning stage. At that stage, the remaining particles are filtered out.

Now the exhaust air enters the fan where it is discharged into the atmosphere.



### Separation by metal rib

The first cleaning stage functions due to multiple deflection of the air flow through a labyrinth of ribs made of galvanised sheet steel.

Following the physical laws of a mass flow separator, the air velocity is significantly reduced and thus the main part of all solids is already deposited in the first stage of filtration.

In the second cleaning stage, the entire pre-filtered air stream is passed through a fine dust filter mat to separate the remaining particles from the air stream.

The purified exhaust air is discharged into the atmosphere via the exhaust air duct.

Technical Specifications													
Item No. with	Item No. with	FARB-MEISTER	Motor [kW]	Height	Width		Frame 1		Frame 2		Housing Width	Exhaust Air Port	Volume Flow
Cardboard Filter	Metal Ribs	Modell		A	B	B1	C	D	E	F	G	Ø	[m³/h]
527 100	527 130	10/25	2.5	1,290	2,500	2,635	1,540	3,140	1,790	3,640	2,505	400	4,500
		10/25	1.0/4.0	1,290	2,500	2,635	1,540	3,140	1,790	3,640	2,505	400	4,500
527 200	527 230	10/30	2.5	1,290	3,000	3,135	1,540	3,640	1,790	4,140	3,005	400	5,400
		10/30	1.0/4.0	1,290	3,000	3,135	1,540	3,640	1,790	4,140	3,005	400	5,400
527 300	527 330	20/20	2.5	2,290	2,000	2,135	2,540	2,640	2,790	3,140	2,005	400	7,200
		20/20	1.0/4.0	2,290	2,000	2,135	2,540	2,640	2,790	3,140	2,005	400	7,200
527 400	527 430	20/25	3.6	2,290	2,500	2,635	2,540	3,140	2,790	3,640	2,505	400	9,000
		20/25	1.0/4.0	2,290	2,500	2,635	2,540	3,140	2,790	3,640	2,505	400	9,000
527 500	527 530	20/30	3.6	2,290	3,000	3,135	2,540	3,640	2,790	4,140	3,005	400	10,800
		20/30	1.0/4.0	2,290	3,000	3,135	2,540	3,640	2,790	4,140	3,005	400	10,800
527 600	527 630	20/30	5.0	2,290	3,000	3,135	2,540	3,640	2,790	4,140	3,005	450	13,200
		20/30	1.8/6.5	2,290	3,000	3,135	2,540	3,640	2,790	4,140	3,005	450	13,200

## Paint spray mist extraction wall or optional underfloor extraction

**UNIVERSA**, this name truly stands for the universal utilization of this paint mist extraction system.

When connecting the FARBMEISTER to an underfloor unit which is recessed into the floor, it turns into the **UNIVERSA**. Still usable as a real spray wall, paint mist and solvents can be extracted downwards over a large area in conjunction with the UNIVERSA. For frequently changing spraying jobs, it is often more favourable to spray from one wall area and to have an alternative of treating corpus parts from all sides.

This **combination of spray wall and underfloor extraction system** is therefore of invaluable value.

The pit depth of only 500 mm ensures that the suction flow is effective over the entire surface and achieves an optimum spraying result. The extracted air volume can optionally and continuously be directed via the extraction wall and/or via the underfloor unit. This individual arrangement of the air volume distribution, which can be easily adjusted to the spraying process, leaves nothing to be desired.

**Energy savings:** A large proportion of the painting times is taken up by the set-up times or the flash-off operation. In order to avoid that warm air is unnecessarily extracted from the painting room during these „non-productive times“, the FARBMEISTER can be equipped with a pneumatically operated **energy-saving flap**. It ensures that the air volume is reduced when the spray gun is hooked up. When it is resumed, the air volume automatically increases to full power.

**Control cabinets** are configured individually for each customer!

They can additionally be equipped with a **run-on time/automatic shut-off for evaporation operation**. With this type of control, it is possible to keep the fan running for the time of a planned evaporation even though the work in the spray room is already completed. The fan then switches off the system automatically.

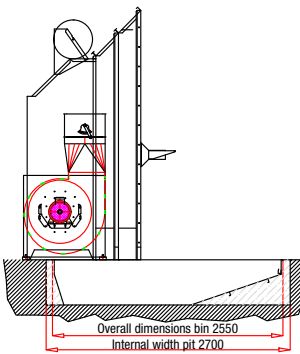
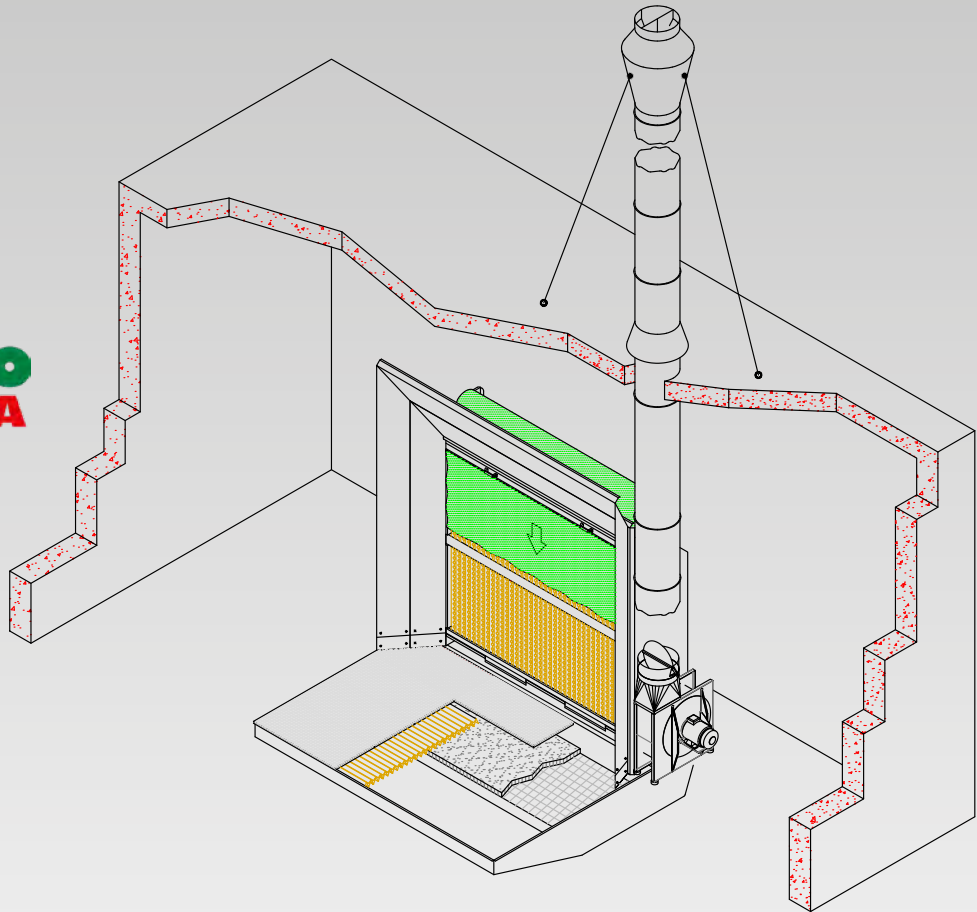
For information on a suitable **fresh-air system** for the FARBMEISTER and the UNIVERSA please contact our sales representatives.

At any time, the **FARBMEISTER** can be converted into an underfloor extraction system, the

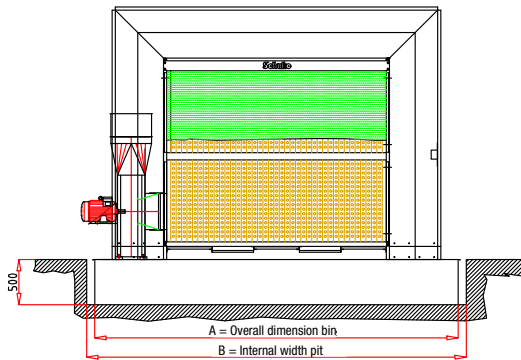
**Schuko  
UNIVERSA**

A wall clearance of 50mm is required for motor ventilation.

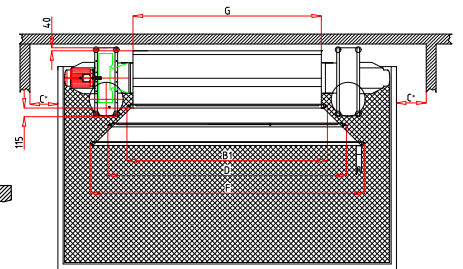
\*Ø 450 mm = 235 mm  
\*\*Ø 450 mm = 100 mm



Side view



Front view



Top view

### Dimensions

UNIVERSA 28/30 FARBMEISTER			
	Item No. 527 700		
Modell	A	B	C*
20/20	3,055	3,195	140
20/25	3,055	3,195	390
20/30	3,055	3,195	640

UNIVERSA 28/40 FARBMEISTER			
	Item No. 527 800		
Modell	A	B	C*
20/20	4,060	4,200	0
20/25	4,060	4,200	0
20/30	4,060	4,200	115

\* Dimension C must be kept to guarantee sufficient wall distance for the fan. At the side where no fan is fitted, the wall can reach up to the pit.

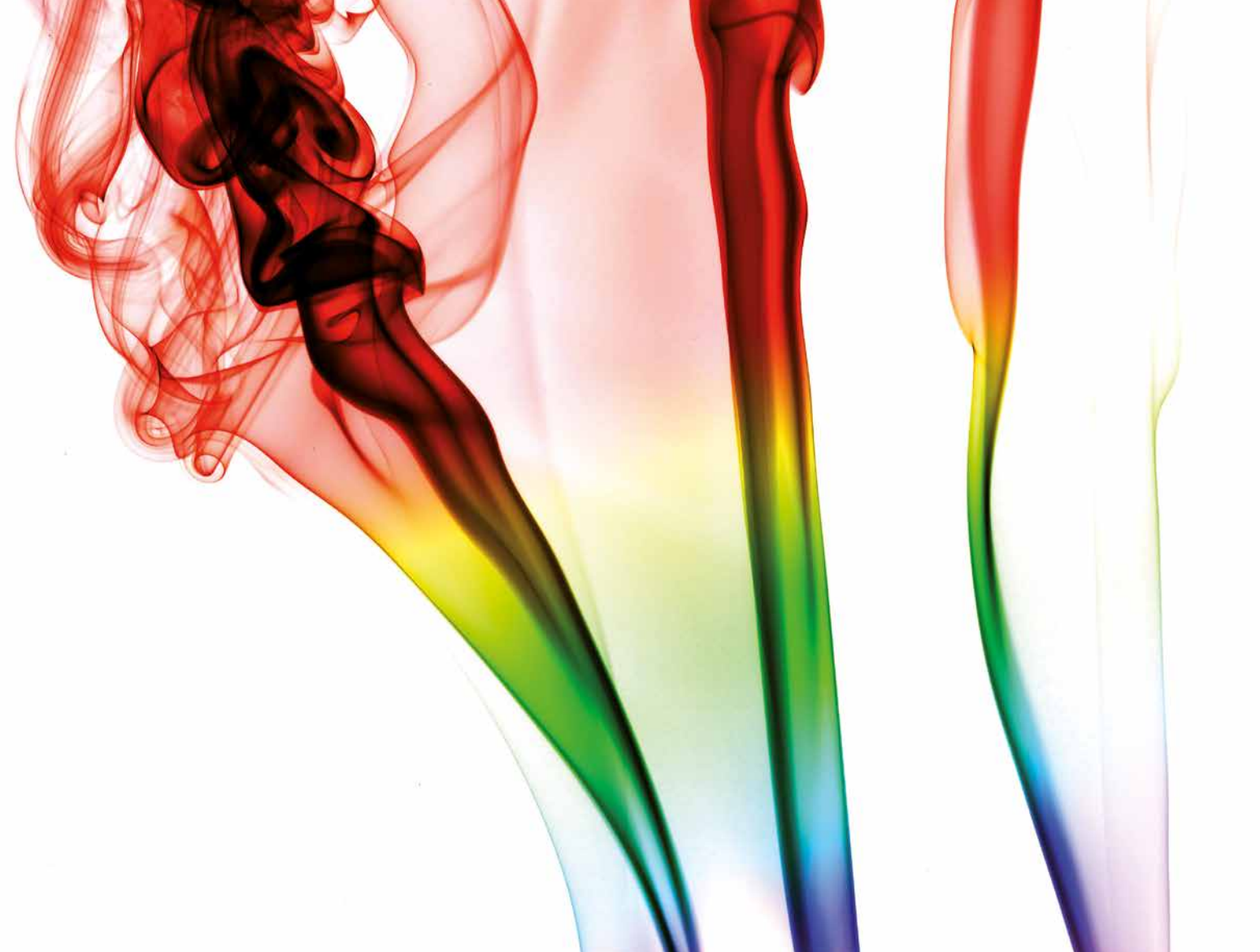
For dimensions and technical specifications of the paint spray mist extraction wall, please refer to the table on page 4.

## Take your personal choice to get your ideal paint spray mist extraction system from the Schuko FARBMEISTER or UNIVERSA series

Item No.	Quantity	Description
527 100		FARBMEISTER Model 10/25; 2.5 kW; 400 mm Ø; 4,500 m³/h
527 200		FARBMEISTER Model 10/30; 2.5 kW; 400 mm Ø; 5,400 m³/h
527 300		FARBMEISTER Model 20/20; 2.5 kW; 400 mm Ø; 7,200 m³/h
527 400		FARBMEISTER Model 20/25; 3.6 kW; 400 mm Ø; 9,000 m³/h
527 500		FARBMEISTER Model 20/30; 3.6 kW; 400 mm Ø; 10,800 m³/h
527 600		FARBMEISTER Model 20/30; 5.0 kW; 450 mm Ø; 13,200 m³/h
511 020		Front grille for FARBMEISTER, 1,000 x 2,500 x 100 mm
511 030		Front grille for FARBMEISTER, 1,000 x 3,000 x 100 mm
511 040		Front grille for FARBMEISTER, 1,000 x 3,500 x 100 mm
511 060		Front grille for FARBMEISTER, 1,250 x 2,500 x 100 mm
511 070		Front grille for FARBMEISTER, 1,250 x 3,000 x 100 mm
511 080		Front grille for FARBMEISTER, 1,250 x 3,500 x 100 mm
527 110		First extraction surface extension for FARBMEISTER Typ 10/25
527 210		First extraction surface extension for FARBMEISTER Typ 10/30
527 310		First extraction surface extension for FARBMEISTER Typ 20/20
527 410		First extraction surface extension for FARBMEISTER Typ 20/25
527 510		First extraction surface extension for FARBMEISTER Typ 20/30
527 120		Second extraction surface extension for FARBMEISTER Typ 10/25
527 220		Second extraction surface extension for FARBMEISTER Typ 10/30
527 320		Second extraction surface extension for FARBMEISTER Typ 20/20
527 420		Second extraction surface extension for FARBMEISTER Typ 20/25
527 520		Second extraction surface extension for FARBMEISTER Typ 20/30
527 700		UNIVERSA underfloor unit model 28/30 with air flow control (only in conjunction with FARBMEISTER)
527 800		UNIVERSA underfloor unit model Typ 28/40 with air flow control (only in conjunction with FARBMEISTER)
512 520		Spray gun hangup valve with explosion-proof limit switch, for fan control (to be mounted to spray wall)
528 110		Unreeling device, 2.0 m wide, incl.1 filter reel 2.0 x 25 m
528 120		Unreeling device, 2.5 m wide, incl.1 filter reel 2.5 x 25 m
528 130		Unreeling device, 3.0 m wide, incl. 2 filter reel 1475 mm x 25 m
517 300		Spray and painting stand with rotating and lockable cross
240 000		Tube 400 mm Ø
245 000		Tube 450 mm Ø
517 780		Motor with 2 numbers of rotation, 0.75/4.0 kW, Height 112 for Farbmeister 20/25, 20/30 (8300/1100 c m/h)
517 790		Motor with 2 numbers of rotation, 1.2/5.0 kW, Height 132 for Farbmeister 20/30, (13,200 cbm/h)

Art.-Nr.	Anzahl	Artikelbezeichnung
304 000		Folded spiral-seam tube 400 mm Ø, p.m.
304 500		Folded spiral-seam tube 450 mm Ø, p.m.
454 000		Tube bend 45 deg., 400 mm Ø
454 500		Tube bend 45 deg., 450 mm Ø
904 000		Tube bend 90 deg., 400 mm (6 Segmente)
904 500		Tube bend 90 deg., 450 mm (6 Segmente)
515 700		Deflection bend 45 deg. with bird protection grille 400 mm Ø
515 800		Deflection bend 45 deg. with bird protection grille 450 mm Ø
586 800		Roof lead-through, up to 400 mm Ø
586 900		Roof lead-through, up to 500 mm Ø
272 300		Deflector hood 400 mm Ø
272 400		Deflector hood 450 mm Ø
650 400		Stainless steel clamp incl. sealing tape 400 mm Ø
650 450		Stainless steel clamp incl. sealing tape 450 mm Ø
704 000		Flange ring 400 mm Ø
704 500		Flange ring 450 mm Ø
111 600		Tube silencer 400 mm Ø
111 700		Tube silencer 450 mm Ø
691 010		Tube suspension 400 mm Ø
691 110		Tube suspension 450 mm Ø
524 000		Tube holder 400 mm Ø
524 500		Tube holder 450 mm Ø
		Control cabinets are configured individually for each customer!

For consultation and planning of your paint spray mist extraction and fresh-air systems, please feel free to contact our sales representatives.



## Economic extraction!



Service-Hotline ☎ +49 (0) 180 / 11 11 900 · [service@schuko.de](mailto:service@schuko.de)

49196 Bad Laer · Gewerbepark 2 ☎ +49 (0) 54 24 / 8 06-0 · [info@schuko.de](mailto:info@schuko.de)

88348 Bad Saulgau · Mackstraße 18 ☎ +49 (0) 75 81 / 48 71-0 · [saulgau@schuko.de](mailto:saulgau@schuko.de)

97478 Knetzgau · Industriestraße 22 ☎ +49 (0) 95 27 / 92 28-0 · [knetzgau@schuko.de](mailto:knetzgau@schuko.de)

55481 Kirchberg/H. · Kappeler Str. 20 a ☎ +49 (0) 67 63 / 30 319-0 · [kirchberg@schuko.de](mailto:kirchberg@schuko.de)

14959 Trebbin · Heinrich-Schulte-Südhoff-Str. 1 ☎ +49 (0) 3 37 31 / 8 67-0 · [trebbin@schuko.de](mailto:trebbin@schuko.de)

25451 Quickborn · Pascalstr. 22 ☎ +49 (0) 41 06 / 76 71-0 · [quickborn@schuko.de](mailto:quickborn@schuko.de)

62-561 Ślesin · POLAND · Kolonia Sarnowa · Biskupie Sarnowskie 9 ☎ +48 (0) 63 / 245 64 00 · [slesin@schuko.pl](mailto:slesin@schuko.pl)

[www.schuko.de](http://www.schuko.de)