

Briquetting presses



Economical and space-saving
disposal of dust and chips



Quality - Professional competence and safety

As an owner-managed company with 200 employees in seven factories, Schuko has been manufacturing extraction and filter systems used in wood, paper and plastic processing for over 50 years.

The clientele ranges from craftsmen to medium-sized businesses to major industries.

As a member company of **VDMA** - "Verband Deutscher Maschinen- und Anlagenbau e. V." [German Mechanical and Systems Engineering Association] we place great value on system safety in accordance with the latest state of technology and the current applicable standards.

The Schuko brand is a sign of performance and quality.



Proximity to customers – everything from a single source

Consultation, development, manufacture, supply, mounting, initial operation, maintenance, operator training and area-wide customer service for fast and qualified service.

This is our understanding of service.



Full energy efficiency to save space and reduce costs

Chip storage and disposal takes up a lot of space, is comparatively expensive and involves high safety requirements.

With Compacto briquetting presses, the energy of high-grade raw materials, such as sanding dust, wood chips and sawdust can be used sensibly and advantageously. Chip briquettes require little storage space and have a high calorific value. 2.2 kg of wood briquettes correspond to approx. 1 litre of heating oil.

Depending on the condition of the chips, the volume can be reduced to 1/5 of the original quantity of the chips. Depending on the type of chip, its moisture content and bulk density, it is possible to press between 30 to 250 kg of chip material into pellets per hour. The power requirement is exemplary low. Non-ferrous metals (NF metals) can also be briquetted and profitably recycled.

Compacto briquetting presses are available in six different power classes, which are adapted to the power requirements and available space.

The presses are hydraulically driven. This means that the chips are compressed into briquettes under high pressure.

Optionally, charging can be done by hand with a chip container, an agitator sickle and a screw conveyor, or it can be connected directly to a filter system. This has the advantage of automated briquetting of the chip material.

Schuko offers practical solutions. Existing systems can usually be expanded with a briquetting press.



Compacto briquetting press



Areas of application and advantages

A large number of materials can be compressed by a Compacto briquetting press:

- ✓ wood chips,
- ✓ shredded plastic (Styrol, Styropor, PU and PVC),
- ✓ paper scrap, paper dust,
- ✓ sanding dust,
- ✓ biomass (Miscanthus and hemp),
- ✓ nonferrous shredded metals (copper, aluminium, zinc, bronze and brass),
- ✓ shredded recycling materials,
- ✓ shredded tobacco,
- ✓ and shredded denim.

That is only a selection of the materials tested in practice.

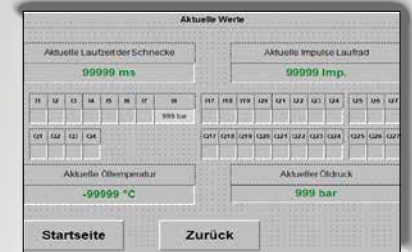
Benefit from the advantages:

- ✓ User-friendly, as all data and setting options can be accessed via the modern touch-screen display
- ✓ Low purchase price
- ✓ Environmental protection due to automatic safety shutdown in case of oil loss indicated by an oil level indicator
- ✓ Overheating protection and higher operational safety due to temperature _ and level monitoring of the hydraulic oil
- ✓ Powerful and versatile in operation
- ✓ Space-saving, can be set up individually and extended to suit individual _ requirements
- ✓ Change of briquetting strength at the touch panel with digital pressure switch
- ✓ Maintenance and service-friendly due to:
 - the hinged and easily accessible cover (see picture on the left),
 - the removable, hardened pressing socket,
 - the special coating of the pressing unit and
 - an inspection cover and an oil drain plug with ball valve.
- ✓ Improved cooling properties due to oil cooler fitted as standard in the models **CT 1100S-20 Plus** and **CT 2500 75/160**



Hydraulic power unit
CT 1100-20

Compacto Touch-Panel



Powerful pressing and convincing arguments

Technical information - Compacto briquetting presses

Model	Art. no.	Hydraulic motor output in kW	Approx. weight (kg)	Approx. briquetting ⁽¹⁾ power (kg/h)	feedscrew Ø (mm)	connection inside Ø (mm)	Diameter (mm) of chip briquettes
CT 800 S-20	740 900	3.0	340	30-45	130	160	60
CT 1100 S-20	741 100	4.0	390	60-75	130	160	60
CT 1100 S-20 PLUS	741 200	3,0	425	80-100 ⁽²⁾	130	160	60
CT 2500 75/160	742 575	15.0	786	150-200	160	210	75

⁽¹⁾ depending on **type of material** and **moisture content**. Exact details are possible after a test briquetting! Reference value refers to heavy woods that can be pressed well.

⁽²⁾ at 80 bar fixed hydraulic pressure

SPS control system with touch control panel

All Compacto briquetting presses are equipped with a SPS control system. The latter manages the control processes within the machine (see illustrations above).

Unbeatable advantages of the SPS control system:

- ✓ detailed and clear display of the 7 inch touch panel start screen
- ✓ individual settings can be selected under menu items, such as
 - contact pressure for briquette hardness, delay times depending on the amount of material
 - language settings German, English and French etc.
- ✓ automatic service messages with notes on maintenance and care
- ✓ red flashing fault report with detailed fault history appears in the event of an error

Compacto CT 1100-S 20 Plus

The high-performance briquetting press with a new, highly efficient VFC (Volume Flow Control) system.

- ✓ Increase in performance of up to 40 % with the same energy consumption
- ✓ Increased environmental protection and occupational safety through particularly quiet operation
- ✓ Lower energy costs due to highly efficient pump with VFC technology (Volume Flow Control).



Accessories of the Compacto briquetting press

- | | |
|--|--|
| Hydraulic oil cooler | <ul style="list-style-type: none">- Area of application: multi-shift operations
For improved cooling properties, the installation of an oil cooler is optionally available for the models CT 800 S-20 and CT 1100 S-10.
The models CT 1100 S-20 Plus and CT 2500 75/160 are already equipped with an oil cooler as standard. |
| Control cabinet heating | <ul style="list-style-type: none">- Area of application: press is located in an unheated area |
| Automatic run-up control | <ul style="list-style-type: none">- The operating times of the fan are added up in the briquetting press's SPS control system. After the selected time span has been reached, the press starts and the accumulated time is set to zero. When the material is finished, the press switches off automatically and the time span is recalculated. |
| Level indicator | <ul style="list-style-type: none">- The mechanical level indicator is installed directly in the storage container. If the material level rises, a microswitch is actuated which turns on the briquetting press. After the material is finished, the press switches off automatically. |
| Die lubrication system
(see illustration right) | <ul style="list-style-type: none">- Area of application: materials which are difficult to press |
| Special pressing grease | <ul style="list-style-type: none">- For Compacto briquetting presses especially for high pressure |

Art. no. 771850 - per cartridge
Art. no. 770800 - per 10 cartridges



Possibilities for combining Compacto briquetting presses

SPB 50 chip container for VACOMAT mobile dust removers
200 XP/XPe, 250 XP, 300 XP and 350 XP
with briquetting presses

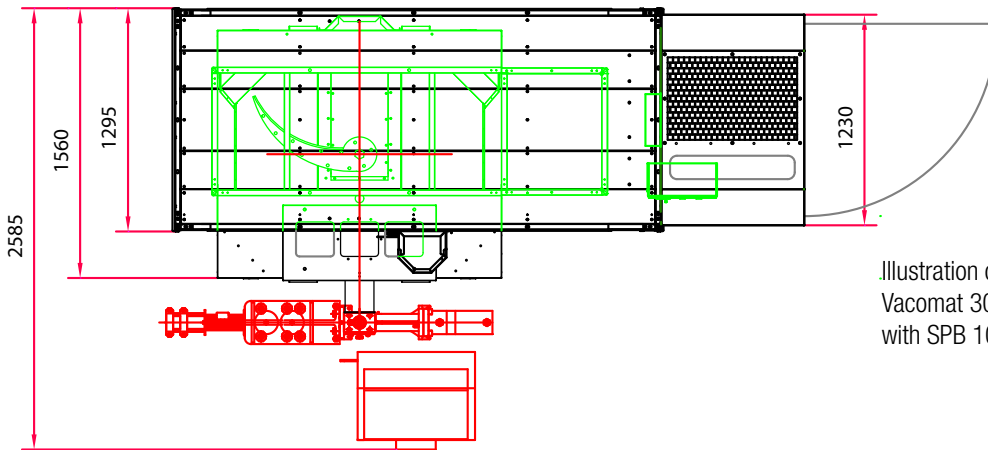
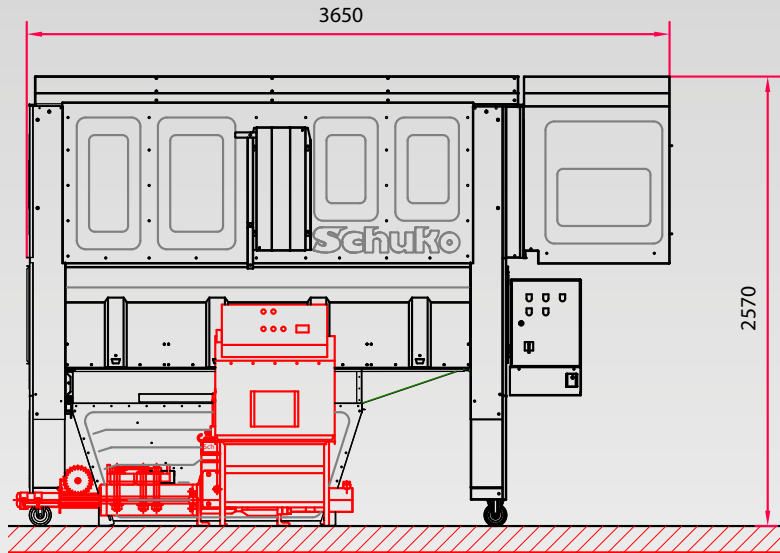


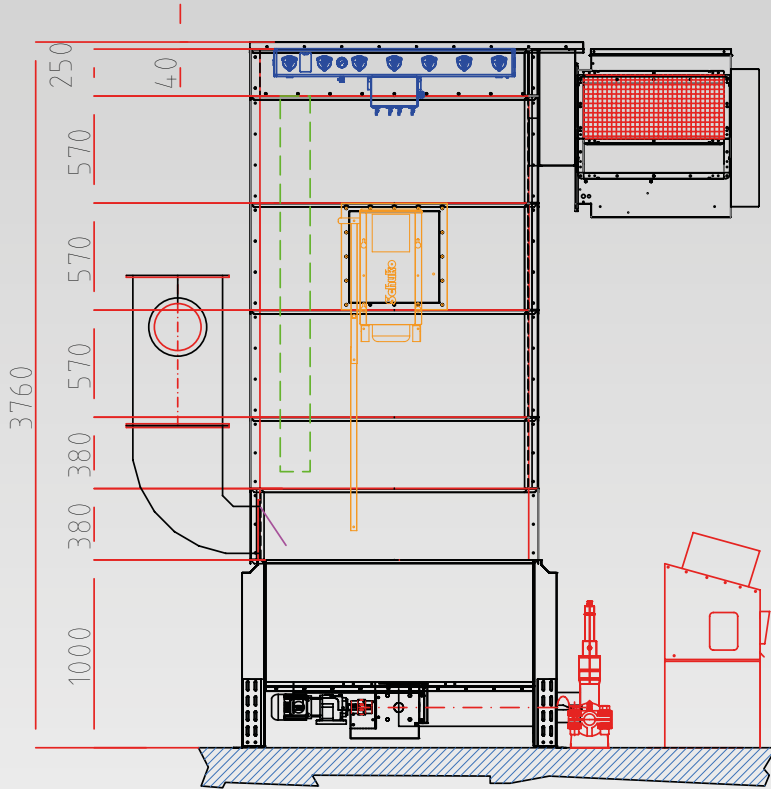
Illustration of mobile dust collectors
Vacomat 300 XP
with SPB 100/4/130 briquetting press

chip container:	for:			
SPB 100/3/130	Vacomat 200 XP/XPe			
SPB 100/4/130	Vacomat 250 XP, 300 XP, 350 XP and TWIN			
Typ		Art. no.	Contents	Height
		m ³	mm	
Chip container SPB 100/3/130		750 130	1,0	910
Chip container SPB 100/4/130		750 150	1,0	910

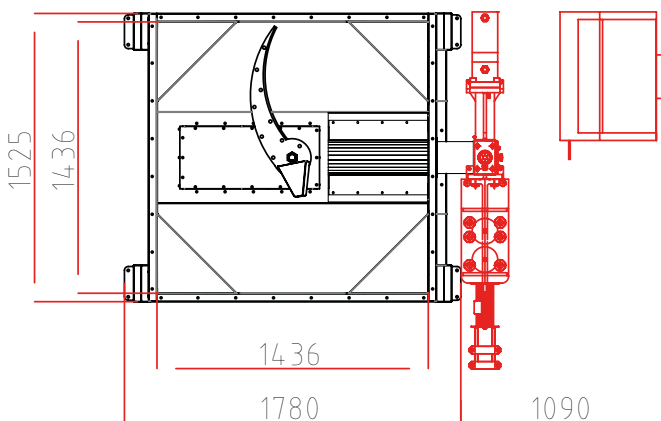
In connection with deduster type	Total amount mm
Vacomat 200 XP, 200 XPe	2.130
Vacomat 250 XP, 300 XP	2.570
Vacomat 350 XP, 350 XP TWIN	2.660
When using SPB 100/4 and chip collection bins the height remains the same.	

Possible combination

Chip container with Vacomat N-1000 and Compacto briquetting press



Electronic length monitoring of the pellets via impeller-controlled pulse generator in combination with press switch-off at the end of material.



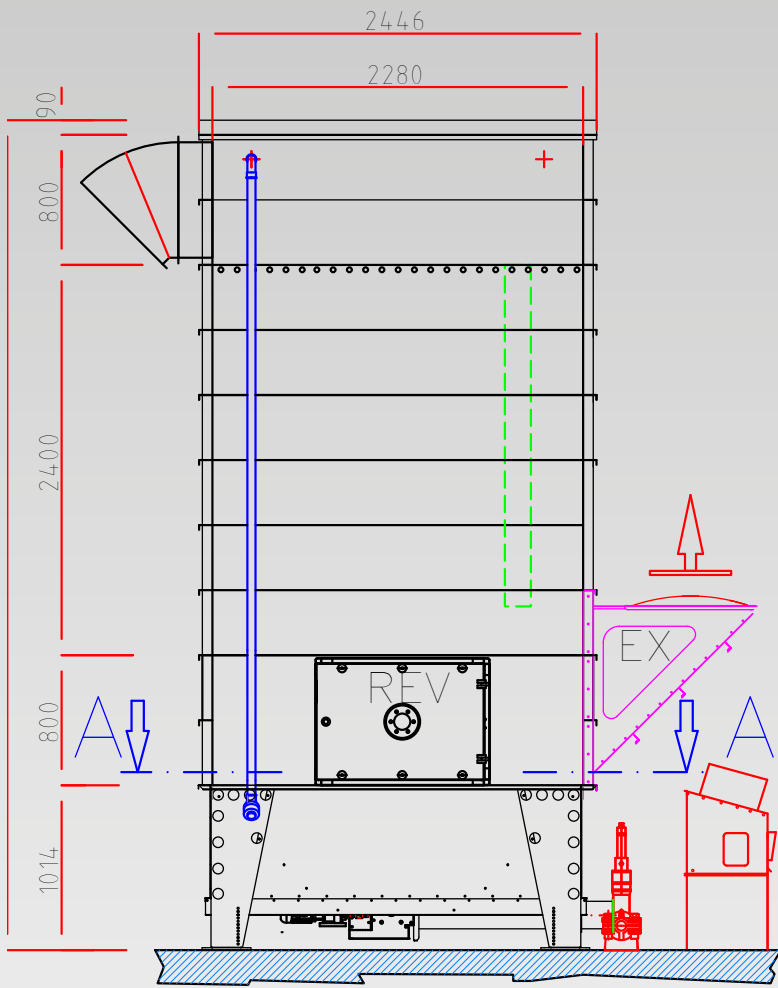
Base for VACOMAT N-1000

- > Chip container including extraction screw with motor drive and agitator
- > Vacomat N-1000 filter attachment unit

Base for N-1000 Shown on Vacomat N-1000

Model	Art. no.	Contents m ³	Height mm
Base for Vacomat N-1000	635 550	1,317	1.000
Expansion enlargement for N-1000	635 700	1,17	570

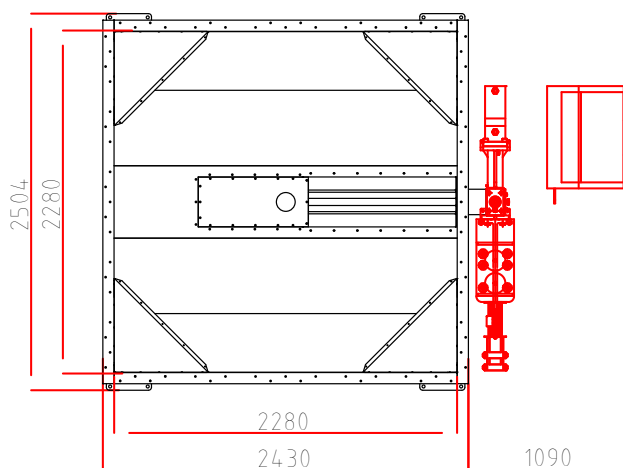
Chip container SPB 2323 with Validus filter attachment and Compacto briquetting press



Compacto CT 2500

Compacto CT 1100

Control cabinet of a briquetting press



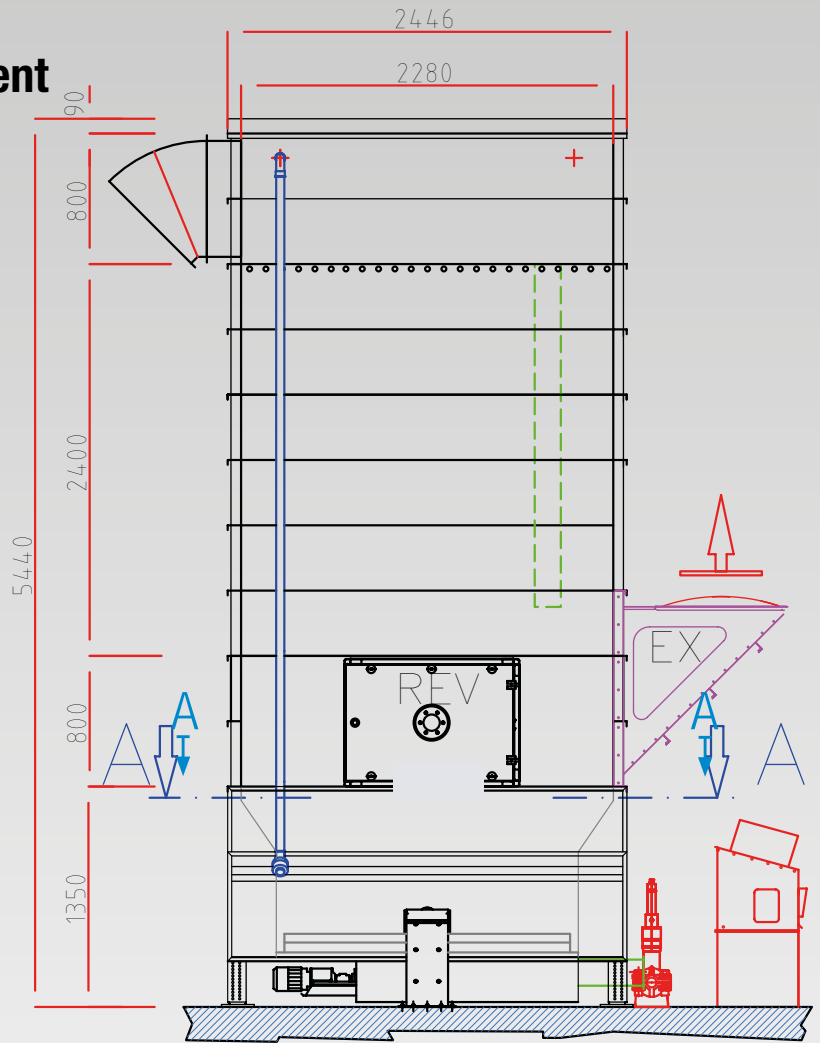
SPB 2323 chip container

- > Chip container including extraction screw with motorised drive and agitator
- > Validus Model 2323 filter attachment

Chip Container SPB 2323 filter attachment

Model	Art. no.	Contents m ³	Heigh mm
Chip container SPB 2323 for CT 800-CT1100	751 150	3.5	1,020
Chip container SPB 2323 Validus for CT 2500	751 170	3.5	1,020
Chip container SPB 2323 Validus prepared for double ZRS-10	751 367	3.5	1,020
Transition for SPB 2323 for filter attachment Validus	758 960		800
Expansion enlargement	769 050	2.1	400

Cargo floor with Validus filter attachment

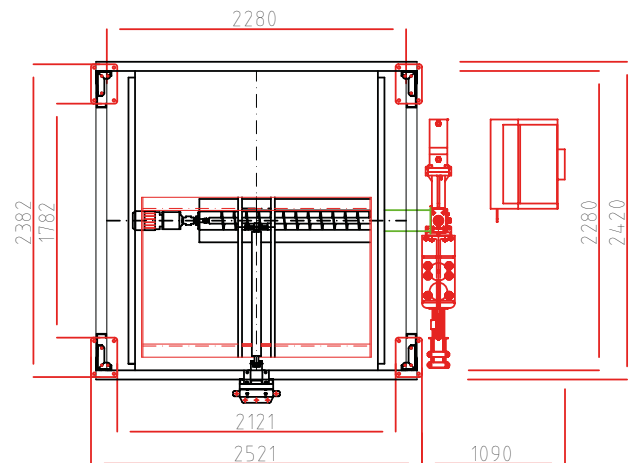


Cargo floor

- > including extraction screw, hydraulic system and electrical controls
- > Validus Model 2323 filter attachment

Cargo floor with Validus filter attachment			
Model	Art. no.	Contents m ³	Height mm
SB 1 cargo floor	758 700	4,72	1350
SB 2 cargo floor	758 800	9,45	1350
SB 3 cargo floor	758 900	14,17	1350
Expansion enlargement*	769 050	2,1	400
* One expansion enlargement per cargo floor			

View A-A

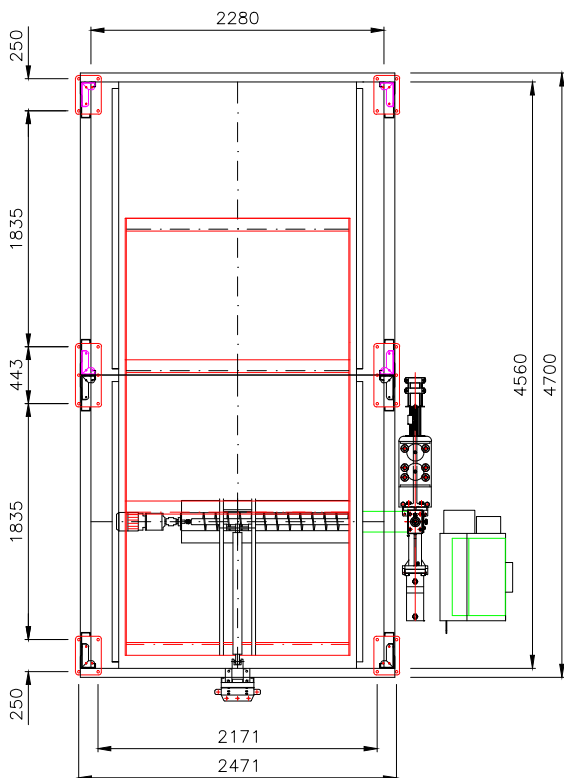


Cargo floor SBV 1



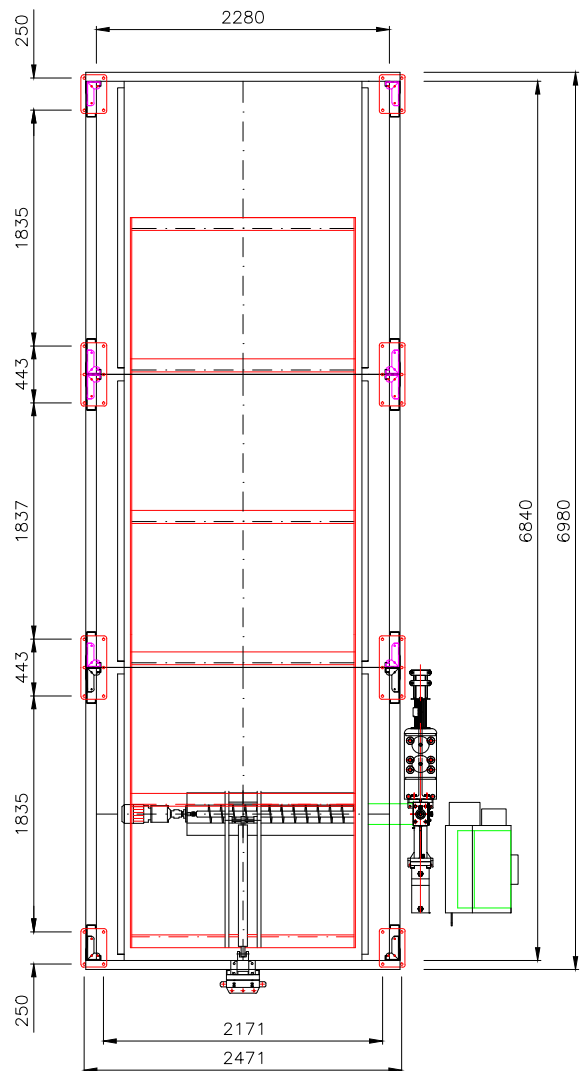
Schuko
VALIDUS

View A-A



Cargo floor SBV 2

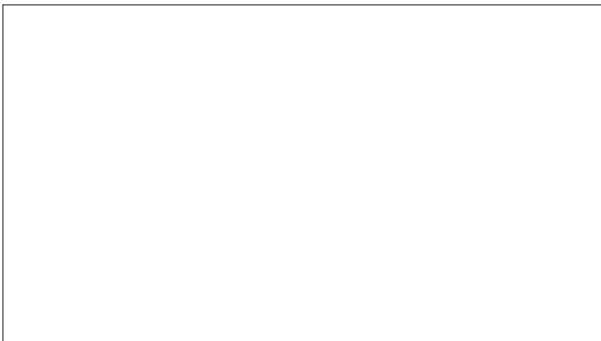
View A-A



Cargo floor SBV 3



Quality that pays off!



Schuko

Dust extraction and filter technology

+49 (0) 7581 / 4871-0
international@schuko.de

- | | | |
|---|-----------------------|-----------------------|
| 49196 Bad Laer · Gewerbepark 2 | +49 (0)5424 / 806-0 | · info@schuko.de |
| 88348 Bad Saulgau · Mackstraße 18 | +49 (0)7581 / 4871-0 | · saulgau@schuko.de |
| 97478 Knetzgau · Industriestraße 22 | +49 (0)9527 / 9228-0 | · knetzgau@schuko.de |
| 55481 Kirchberg/H. · Kappeler Str. 20 a | +49 (0)6763 / 30319-0 | · kirchberg@schuko.de |
| 14959 Trebbin · Heinrich-Schulte-Südhoff-Str. 1 | +49 (0)33731 / 867-0 | · trebbin@schuko.de |
| 25451 Quickborn · Pascalstr. 22 | +49 (0)4106 / 7671-0 | · quickborn@schuko.de |
| 62-561 Ślesin, POLAND · Kolonia Sarnowa · Biskupie Sarnowskie 9 | +48 (0)63 / 2456400 | · slesin@schuko.pl |
| Service | +49 (0)180 / 1111900 | · service@schuko.de |

www.schuko.com

Manufactured in Germany / 2110/03/2024 / Technical modifications and errors reserved
 Illustrations may show optional equipment